

GigaDevice MCU Team	Version	6 Pages
	English V 1.0	
	Name: GD32MCUInfoQuery User Manual	

# GD32MCUInfoQuery User Manual

## Directory

GD32MCUInfoQuery User Manual.....	1
<b>1. Introduction.....</b>	<b>3</b>
1.1 Function description.....	3
1.2 Purpose.....	3
1.3 Operating environment.....	3
1.4 Package composition.....	3
<b>2. Running.....</b>	<b>4</b>
<b>3. Using Details.....</b>	<b>4</b>
3.1 Layout introduction.....	4
3.2 Flowchart of Operation.....	5
<b>4. Attentions.....</b>	<b>5</b>
<b>5. Update .....</b>	<b>5</b>
<b>6. Q&amp;A.....</b>	<b>5</b>

## 1. Introduction

This user manual introduces a GD32 series MCU information query application software. Users can use the GD32 MCU information query software to easily select models.

### 1.1 Function description

The GD32 MCU information query software is an auxiliary selection application. It not only displays the selection information of the GD32 series of MCUs, but also can quickly filter matching MCU models according to user needs.

### 1.2 Purpose

In order to improve the efficiency of user selection, reduce the difficulty of MCU selection. Developed a GD32 series MCU information query application software. Make the selection process more friendly and convenient. The user clicks through the UI interface to quickly filter and match the MCU that meets the needs.

### 1.3 Operating environment

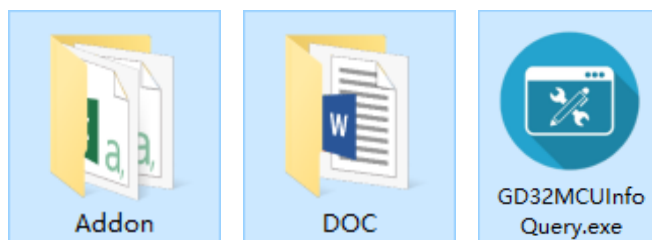
Operating system: win7/win10 64 bit

Processor: i3-9100 3.6GHz

Screen resolution: not less than 1242\*752

### 1.4 Package composition

The Package contains the Addon folder, the DOC folder and an exe file.



The Addon folder: Includes two csv files. *demo.csv* is a sample file. You can fill in the information of the new model MCU in *template.csv* according to the format of *demo.csv*, so that the information in *template.csv* will be loaded when the software is initialized. You can also insert new columns in *template.csv* to adapt to different MCUs.

The DOC folder: Includes the software user manual.

Exe file: Software running file.

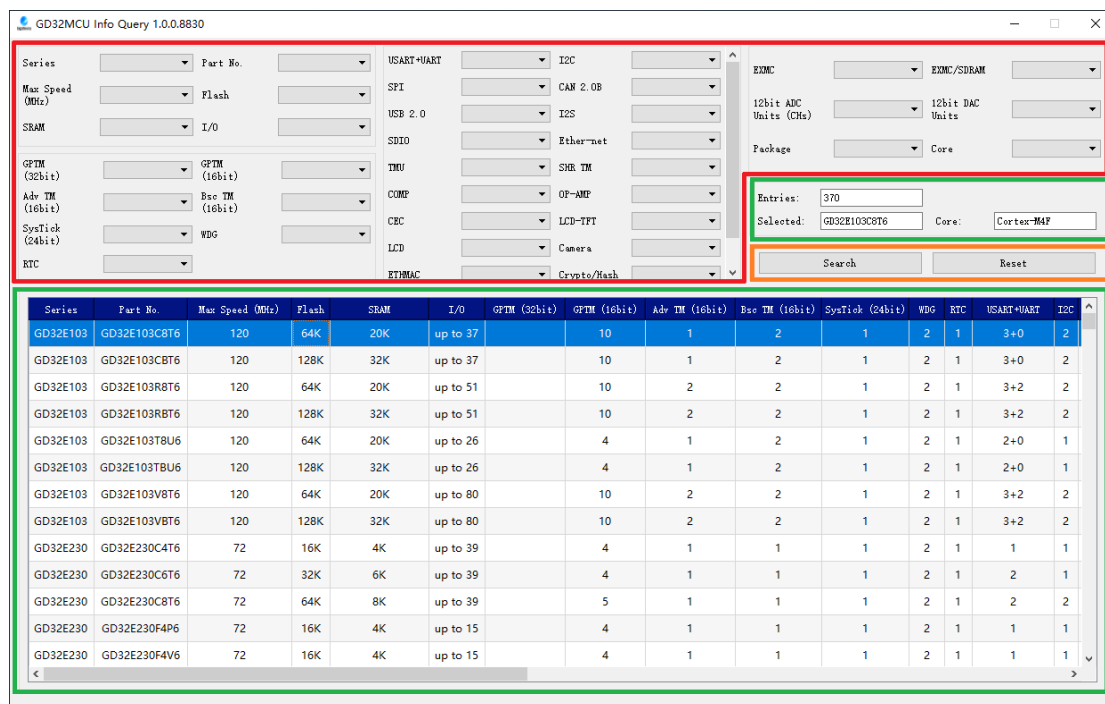
## 2. Running

This software is running on PC and compatible computers, and on platforms of WINDOWS. There's no need to setup the software, the only thing you need to do is to click the icon to operate the software.

## 3. Using Details

### 3.1 Layout introduction

The main window is divided into condition filtering area, operation area and information display area.



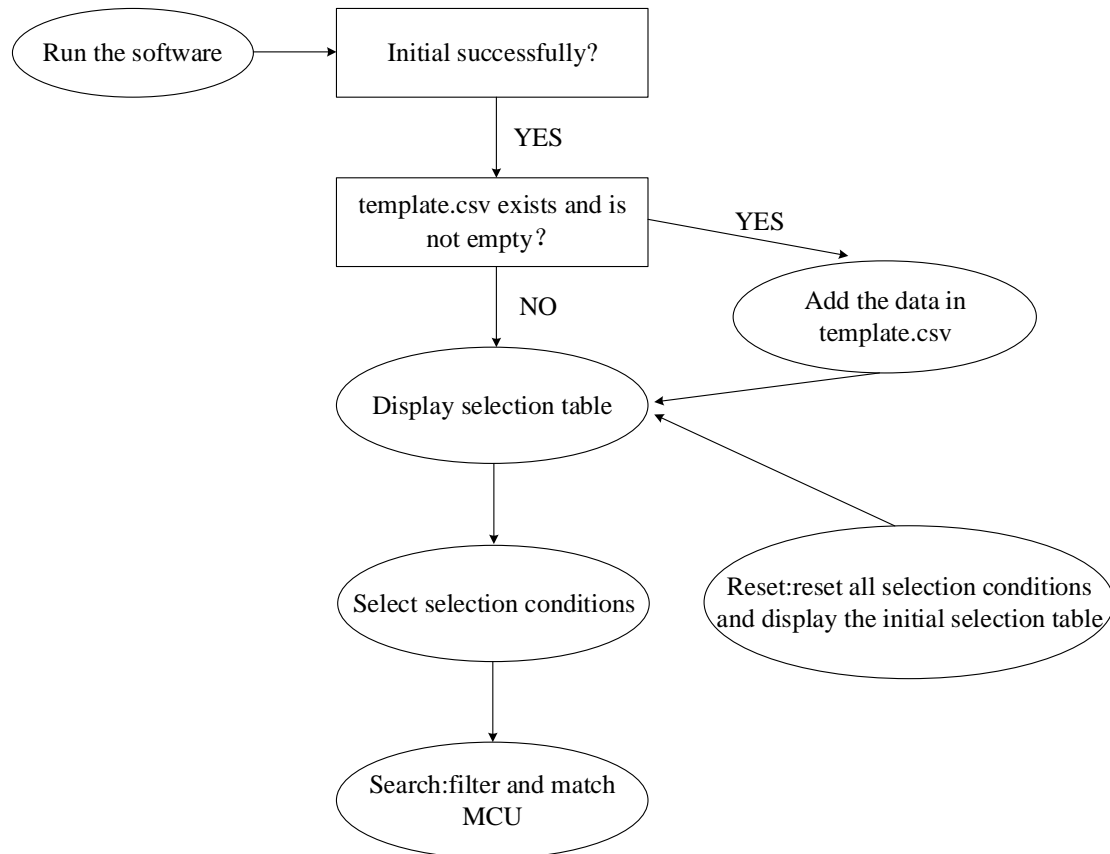
Series	Part No.	Max Speed (MHz)	Flash	SRAM	I/O	GPTM (32bit)	GPTM (16bit)	Adv TM (16bit)	Bsc TM (16bit)	SysTick (24bit)	WDG	RTC	USART+UART	I2C
GD32E103	GD32E103C8T6	120	64K	20K	up to 37		10	1	2	1	2	1	3+0	2
GD32E103	GD32E103CBT6	120	128K	32K	up to 37		10	1	2	1	2	1	3+0	2
GD32E103	GD32E103R8T6	120	64K	20K	up to 51		10	2	2	1	2	1	3+2	2
GD32E103	GD32E103RBT6	120	128K	32K	up to 51		10	2	2	1	2	1	3+2	2
GD32E103	GD32E103T8U6	120	64K	20K	up to 26		4	1	2	1	2	1	2+0	1
GD32E103	GD32E103TBU6	120	128K	32K	up to 26		4	1	2	1	2	1	2+0	1
GD32E103	GD32E103V8T6	120	64K	20K	up to 80		10	2	2	1	2	1	3+2	2
GD32E103	GD32E103VBT6	120	128K	32K	up to 80		10	2	2	1	2	1	3+2	2
GD32E230	GD32E230C4T6	72	16K	4K	up to 39		4	1	1	1	2	1	1	1
GD32E230	GD32E230C6T6	72	32K	6K	up to 39		4	1	1	1	2	1	2	1
GD32E230	GD32E230C8T6	72	64K	8K	up to 39		5	1	1	1	2	1	2	2
GD32E230	GD32E230F4P6	72	16K	4K	up to 15		4	1	1	1	2	1	1	1
GD32E230	GD32E230F4V6	72	16K	4K	up to 15		4	1	1	1	2	1	1	1

Filtering area (Red): According to development needs, click on the MCU conditions.

Operation area (Orange): Divided into search and reset.

Information display area (Green): Show number of entries, the currently selected model and core, display MCU information.

### 3.2 Flowchart of Operation



### 4. Attentions

When the software is initialized, an initial selection table will be loaded, if it is not displayed, you need to contact the developer for configuration.

### 5. Update

Contact the developer.

### 6. Q&A

Q1: Click search after selecting the conditions, the display area is blank.

A1: Too many restrictions are selected, and there is no MCU that meets the requirements.

Q2: How to add other MCU information?

A2: You can fill in the information of the new model MCU in *template.csv* in the Addon folder. MCU information will be automatically loaded when the software is initialized.